



**JUDGEMEADOW
COMMUNITY COLLEGE**
Lionheart Educational Trust



JUDGEMEADOW COMMUNITY COLLEGE

Empowering Hearts, Inspiring Minds

PROSPECTUS

Contents

WELCOME FROM OUR PRINCIPAL	4
OUR PLEDGE.....	5
TRANSITION	6
ACADEMIC EXCELLENCE.....	7
POLISHED JM PROGRAMME	8
SUBJECTS	10
ENGLISH AS AN ADDITIONAL LANGUAGE (EAL).....	15
SCHOOL FACILITIES	16
HOLISTIC DEVELOPMENT.....	18
ENRICHMENT	20
ADMISSIONS.....	21
CONTINUE YOUR JOURNEY.....	22
LIONHEART EDUCATIONAL TRUST	23

Welcome to

Judgemeadow Community College

From our Principal

A very warm welcome to Judgemeadow Community College, an 11-16 school at the heart of Evington and part of the Lionheart Educational Trust. Our school enjoys a long and proud history of serving a diverse, multicultural community locally and from across Leicester city.

At Judgemeadow we believe in Empowering Hearts and Inspiring Minds

We have five HEART Values that we build our school around:

Happiness
Excellence
Ambition
Respect
Teamwork

These values under-pin all that we do, to create a vibrant, engaging and caring community where everyone is a learner. We are profoundly committed to exacting excellent standards and are highly aspirational for all staff and pupils. We are creating future leaders of our own and other communities and so with expert teaching and the very highest standard of behaviour, we're committed to creating kind, disciplined and hard-working young adults. At the heart of everything we do is preparing young people for their next steps. We want to see our pupils flourish into independent, resilient and mature young people who are happy, respectful and full of ambition. We hope as you read our prospectus, you will get a real sense of everything we can offer your child during their time with us.



A handwritten signature in black ink, appearing to read 'AG' with a flourish.

Alex Grainge
Associate Principal



Our Pledge

We are excited to work in partnership with parents/carers to see young people develop academically, holistically and spiritually during their time at Judgemeadow.

THIS IS BECAUSE:

- Judgemeadow Community College is committed to developing an outstanding curriculum. Teaching and Learning CPD sessions encourage staff to think about what they teach, when they teach it, why they teach it and how it is assessed. We are developing a five-year curriculum to stretch and challenge all pupils.
- Pupils feel safe and secure at school. Safeguarding is strong with clear systems in place and any child protection issues are dealt with quickly and effectively.
- The Personal Development Curriculum, assembly plan and tutor programme provides pupils with a clear education about Fundamental Values which helps to raise their awareness of what living and working in modern Britain will entail. There are a range of opportunities for pupils to get involved in leadership roles to embark on projects that challenge any bullying issues, support their local community and their college.
- We have increasingly high expectations about behaviour and if they are not met we utilise a simple C1 and C2 warning system.
- Judgemeadow Community College is well led; the leadership team is well supported by the Lionheart Educational Trust executive team who provide expertise and strategic direction from an outstanding lead school.

Being Judgemeadow

Transition from Primary School to Judgemeadow

We know just how important it is for Year 6 pupils to feel confident about making the step up from primary to secondary school, which is why we have developed a bespoke transition programme, known as 'Being Judgemeadow'.

Our new Year 7 pupils have a transition at the end of Year 6 where they meet their form tutor and other members of their form on site at Judgemeadow, allowing them to become familiar with the school.

At the start of Year 7 we have a two day 'Being Judgemeadow' programme where Year 7 pupils learn all about life at Judgemeadow Community College through a range of bespoke activities and taught sessions.



“On my first day, I remember being really nervous! But upon meeting my form tutor and group I knew I had nothing to worry about. Staff and pupils are really supportive, and there’s always someone on hand to help you if you’re struggling. My teachers are really energetic, and make learning really enjoyable.”

Mohammed, Year 7



Academic Excellence

Our curriculum is designed to ensure that all pupils have a rewarding and enjoyable experience of school.

To us this means that learning is a challenging and stimulating experience; one that successfully prepares pupils for their future. Judgemeadow Community College is building toward a coherent and seamless five-year curriculum, creating an environment that enables subject leaders and teachers to explore values crucial to progression in their subject areas. This leads not only to positive outcomes, but positive experiences which enrich cultural capital and engender interest.

We believe in a knowledge engaged curriculum, teaching knowledge in order to allow pupils to apply skills and to demonstrate changes to long term memory and learning over time. The development of the knowledge-based aspects of the curriculum going forward are based around the research of Oliver Caviglioli and the advocacy of the 'effective learning strategies.'

Pupils will also experience our bespoke Personal Development Curriculum (PDC). During PDC lessons, pupils develop the knowledge, skills and attributes they need to keep healthy and safe and prepared for life and work in modern Britain. Our PDC also helps pupils in their understanding of fundamental values and other cultures and beliefs.

SUBJECT	PERIODS PER WEEK 50 MINUTES
English Language and Literature	5
Maths	5
Science	5
French or Spanish	3
History	2
Geography	2
Religious Education	1
Physical Education	2
Music/Art/Drama	2
Design Technology and Food	2
IT	1



Polished

JM Programme

At Judgemeanow Community College, we are determined to help our pupils develop the knowledge and skills necessary to compete for the best opportunities in work and study.

THE IMPORTANCE OF SOFT SKILLS

We believe in developing pupils academically and holistically: that means providing them with the qualifications necessary for success, but also attitude and aptitudes to progress. According to UCAS, employers look for: a positive attitude to work, punctuality, flexibility, verbal communication skills and the ability to make a professional introduction.

DEVELOPING SOFT SKILLS

Being 'Polished' is about being able to successfully present yourself to others. This combines confidence; the ability to speak formally; finding your own voice; and knowing how to behave appropriately in different situations.

Our 'Polished JM' programme helps pupils to develop these key skills, whilst providing challenge, boosting independence and encouraging the exploration of new ideas. Each letter of this programme represents a new skill for our pupils to learn or experience to take part in during their five years with us. Importantly, the criteria is achievable for every pupil, regardless of academic ability. Setting challenges outside of the classroom plays an integral part in the soft skills learnt.

By the end of Year 8, every pupil should have gathered the evidence they require to graduate from the programme and gain their 'Polished JM Passport'. They are then expected to maintain these soft skills throughout Years 9, 10 and 11, and complete further challenges to gain a Platinum Award in their final year. Both the 'Passport' and the Platinum Award can be used as evidence for our pupils' Post-16 applications, providing proof of skills desirable for Further Education agencies.



P	LAY AN ACTIVE ROLE IN THE JUDGEMEADOW COMMUNITY Demonstrate through your school work or extra-curricular activities that you believe in equality and acceptance of everyone and that you are kind to others.
O	RACY Be able to speak in front of others articulately and with confidence, projecting your voice and thinking about your audience.
L	EADERSHIP Be a leader at Judgemeanow e.g. an ambassador for the school, represent the school at an event such as parents' evening, a conference or sports fixture.
I	NDEPENDENCE Demonstrate independence in your learning.
S	HOW A LOVE OF READING Demonstrate a love of reading of both fiction and non-fiction texts.
H	ELP OTHERS Raise money for charity within the school or community.
E	XPERIENCES Try out new experiences, do something you have never done before, push yourself out of your comfort zone and challenge yourself.
D	EMONSTRATE THE JUDGEMEADOW ETHOS Show you have the qualities and attributes of a Judgemeanow pupil, kindness, respect and a positive work ethic.
J	JOIN IN Take part in school activities and be part of a team with others.
M	MEETING DEADLINES AND BEING ORGANISED Complete work on time, bring the correct equipment, at all times look smart.

“At Judgemeanow, there are so many extra-curricular activities to get involved in. I especially enjoy the college orchestra and the First Writing Club, which have helped me make many new friends. We get the opportunity to perform in front of the whole school: its great being able to showcase our talent! I am also an Anti-Bullying Ambassador.”

Aysha, Year 8



Our Subjects

The courses at Key Stage 3 have been developed in collaboration with our primary partners and are taught by dedicated subject specialists. The core subjects are designed to build on the skills and interests developed at Key Stage 2, in turn creating a deeper level of learning that produces the perfect foundation for GCSE and beyond.

The diversity of courses at Judgemeadow Community College provides all pupils with the opportunity to explore a variety of ideas, topics and skills in order to nurture engagement and enthusiasm for learning and progress.

“I really enjoy Sports at Judgemeadow. There is a 3G pitch, which is great for football. Lessons are varied, meaning there’s something for all abilities and interests, and extra-curricular clubs are endless. I have taken part in football, basketball, cricket and athletics. My highlight is definitely meeting the Leicester Riders!”

Abdul, Year 9

ENGLISH

In Year 7 we encourage pupils to harness their creativity and enjoyment of literature. Each term will have a different focus: a novel, poetry and a play by Shakespeare. Through these units pupils develop writing skills, with a particular focus on grammatical accuracy, the enrichment of vocabulary and an analytical approach to exploring a wide range of fiction and non-fiction texts.

Discussion, oral presentations and drama are an important part of English studies, securing and developing understanding and equipping pupils with the skills to approach the whole school curriculum with confidence.



MATHS

Content in Mathematics for year 7 is established through the National Curriculum KS3 Programmes of Study. Our topics recognise the varying needs of our pupils on entry, designed to build on the foundations developed at Key Stage 2 and mathematical problem-solving skills which ultimately develop during the course of the year.

These topics include fractions, angles, area, volume, algebra and graphs. Each pupil's progress is reviewed every half term through a summative test, evaluative task and progress check.

SCIENCE

Pupils benefit from being taught by science specialists in a dedicated and furnished laboratory. They are taught fundamental scientific principles with an emphasis on practical and investigative work.

Science is taught in a carefully sequenced manner. This ensures that pupils build understanding, laying a firm foundation for GCSE and beyond.

Topics are taught in blocks of approximately 12 lessons and comprise mini quizzes and end of topic assessments to monitor progress and understanding. These provide excellent opportunities for pupils to check their understanding and bridge any gaps in their knowledge.

PHYSICAL EDUCATION

Through a range of sports, we provide opportunities for all pupils to become physically confident by engaging in various activities that encourage independent learning and teamwork. Our broad curriculum explores health and fitness, orienteering, badminton, basketball, cricket, football, hockey, rugby, tennis and dance, to name but a few.

Skills developed in Physical Education, such as fairness, resilience and respect, can also help to build character and embed core values.

HISTORY

In History pupils are fired with curiosity and imagination as they consider the dilemmas, choices and beliefs of people in the past. Topics studied in Year 7 include the Norman Conquest in 1066, the social and political changes in the years after, then followed by a study of medieval life and the balance of power between Church and State. Through their study, pupils gain a strong understanding of how the world has changed.

History is used as a vehicle for teaching pupils to critically analyse events, text and sources. They develop skills to provide detailed explanations through extended written answers, the expression of ideas and the use of valid evidence.



LANGUAGES

In Year 7, all pupils learn French or Spanish. Language study aims to develop key language and communication skills, building on any previous knowledge developed in Key Stage 2.

Pupils cover a range of topics and develop competencies across the 4 skill areas: listening, speaking, reading and writing; whilst also improving their knowledge of vocabulary and grammar. Pupils are introduced to key strategies to tackle unknown vocabulary and begin to produce extended written pieces. In addition, they learn to communicate competently in speech across familiar topics. They also become familiar with key aspects of life in France/ Spain, and other francophone/Hispanic countries. In Key Stage 4, pupils may take up a second language option for GCSE.

GEOGRAPHY

Geography enables pupils to develop their interest in places, people and the environment which helps them make sense of a complex and changing world. It will help them understand how landscapes are formed, how people and their environment interact and how a diverse range of economies, societies and environments are interconnected.

Topics studied in Geography include map skills, weather and climate, sustainability and eco systems.

Through the curriculum, pupils will develop and consolidate their previous knowledge of the world's major countries and their physical and human features.

RELIGIOUS EDUCATION

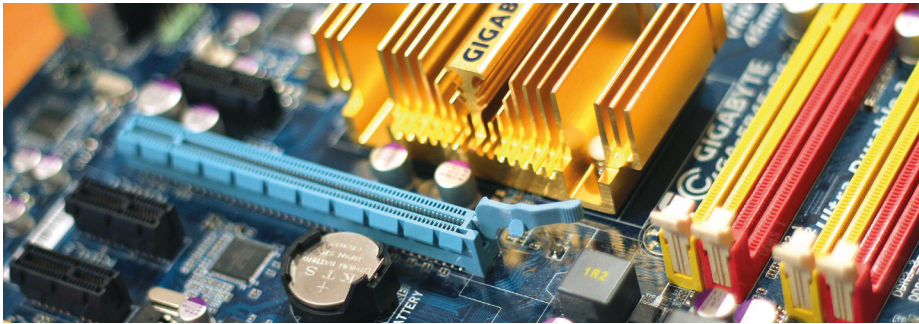
Religious Education teaches us to be compassionate citizens with empathy for different perspectives on the big issues facing modern society. Topics include religion and spirituality and an introduction to world religions.

Pupils begin their philosophical journey by engaging with fundamental questions such as 'Who am I?' 'What is God and should we believe in one?', 'What is religion?', 'What do we know for certain?' and 'How can different religions and cultures get along peacefully?' Pupils consider a wide range of views when answering these questions and look at how culture and religion affects attitudes and perspectives.

INFORMATION TECHNOLOGY

At Key Stage 3 the Computing curriculum has been designed to build upon skills, knowledge and understanding that would be developed at primary level. Topics taught are mapped against the following six key competencies: algorithms; programming and development; data and data representation; hardware and processing; communications and networks; and information technology.

The Key Stage 3 curriculum prepares the core concepts taught at Key Stage 4, if pupils opt to take OCR Computer Science GCSE.



DESIGN TECHNOLOGY

Design Technology develops pupils' creative and practical working skills through an environment of experimentation and varied ideas. In Year 7, pupils are taught how to present ideas using 2D and 3D drawing techniques; apply CAD/CAM skills using the laser cutter; create a nightlight through the exploration of electrical circuits and input and output devices; and expand their knowledge on designers past and present.

We also teach pupils to appreciate the natural environment through our biomimicry project. Each of these units allows our pupils to develop confidence, skills and creativity when using workshop machinery and hand tools.

FOOD TECHNOLOGY

Food Technology equips pupils with the knowledge, understanding and skills required to cook and eat healthily.

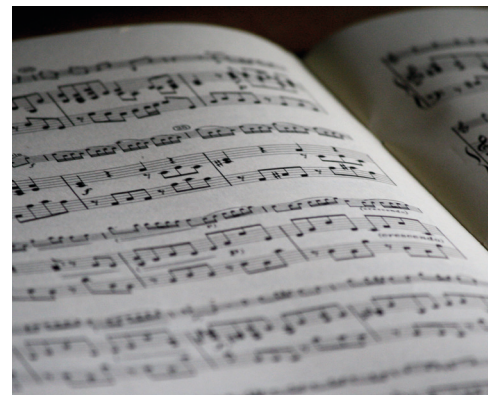
In Year 7, pupils will demonstrate effective and safe cooking skills by planning, preparing and cooking a variety of food. This includes fruit salad, vegetable crumble, fresh pasta and a healthier alternative to blueberry muffins, all learned whilst using different cooking techniques and equipment.



DRAMA

The Drama units in Year 7 introduce key concepts designed to lay the foundation for development and progression during the rest of Key Stage 3. These concepts include creativity, performance and evaluative work, taught through units in mime, freeze-frames, improvisation, devising and scripts. This inspires a growth in the pupils' sense of self and an ability to recognise their own potential.

Each lesson pupils are given the opportunity to perform, receive audience feedback and take part in self and peer assessment opportunities. This ensures that all pupils have the opportunity to discuss and recognise their own strengths and weaknesses, as well as those of their peers.



ART

Year 7 sees pupils introduced to a broad range of new techniques, materials, artists and themes which support the development of effective, creative thinking.

With the creative industries becoming one of the fastest growing industries in the UK, we highlight themes, artists and designers who make an impact in the world today. Themes such as character design, book illustration and story-telling are studied in order for pupils to gain an understanding of how artists and designers navigate the creative process to create a final outcome. Pupils will explore and understand how and why art is relevant in the world today through a series of projects and trips. Skills such as drawing, painting and print making are also studied through the use of contemporary themes, artists and designers.

MUSIC

Learning to play music is the only activity known to stimulate and utilise every part of the brain at once. By learning to perform individually, and in groups, pupils increase their self-confidence, creativity and harness a sense of achievement, as well as increase their cooperation, concentration and communication skills.

In Year 7, pupils are taught performance and composition skills, music theory, listening and analysis. Engaging with music both practically and theoretically prepares pupils for study at Key Stage 4 and also encourages the development of valuable skills beneficial in other curriculum areas.



EAL

Our EAL team work alongside expert teachers in order to provide high quality education for our students who have English as an additional language.

Our main focus is to ensure that students make fantastic progress within their curriculum subject, as well as their English language acquisition. We monitor and track this at regular intervals throughout the academic year.

Students who are new to English are supported with small group and one-to-one interventions by specialist EAL teachers. We focus on reading, writing, speaking and listening to ensure that students are able to get the most out of their mainstream lessons and school experience. In addition to this, we do focused reading sessions during form time, working on expanding students' vocabulary and developing their comprehension skills. We offer a daily homework club after school where students can get support in completing their homework and developing their computing skills if needed.

At KS4, our students who are beginners to the English language complete the Functional skills English qualification. All of our students are given additional support by being paired with a member of the EAL team so that they can be guided through the college application process, work experience and careers advice.



School Facilities

We are proud of our school which boasts clear open spaces and plenty of natural sunlight, as well as open areas for our pupils to socialise and study in.

“The facilities at Judgemeanow are fantastic. We have amazing Science labs, which make experiments all the more fun! Our LRC is stocked to the brim, with 100s of books and resources for learning, and our auditorium makes for fantastic assemblies and talks.”

Leah, Year 10



TEACHING SPACES AND LIBRARY

Our teaching spaces are purpose-built to ensure pupils can learn in the best environments. Science labs are well equipped for practical and theoretical study, as is our Library, filled with books and IT equipment.

The large auditorium provides a university-style experience for pupils when meeting key speakers, and our Art and Design studios are furnished with tools and equipment which encourage creativity.

DINING AND RECREATIONAL SPACES

Pupils have a range of dining spaces to take advantage of at break and lunch times. Hot meals, including halal meals, are provided in the main dining and panoramic dining area, both with ample seating. Quicker meals, such as fresh sandwiches, salads and snacks, can be found in our Deli. Pupils can enjoy these light bites in several areas around the school and outside where eating is permitted.

SPORTS AND EXTRA-CURRICULAR FACILITIES

During lunchtimes, pupils have the opportunity to involve themselves in a range of clubs and societies to meet new friends, develop extra-curricular interests and harness holistic skills. Judgemeadow Community College has a state-of-the-art 3G pitch for football and offers a range of sports, fitness, theatre and music facilities so that pupils can pursue their interests beyond the curriculum.

HIRE FACILITIES

Judgemeadow's extensive range of facilities are available to hire to the community outside of school hours. More information, including facilities at other Trust schools across Leicestershire, can be found at: www.lionhearttrust.org.uk/venuehire



Holistic

Development

We have a clear set of beliefs that drive our school; everyone works together to make the school a learning community where everybody is valued.

We pride ourselves on making sure that our school not only offers the best academic opportunities, but is also able to provide a pastoral system which focuses on safety, wellbeing and the enrichment of pupils' educational experiences. Every young person under our care is a valued individual, provided with the environment to achieve their goals; parents/carers can feel safe in the knowledge that their child will be nurtured, supported and encouraged to succeed.

TUTOR SYSTEM

Pupils will join a tutor group with a designated tutor working with the Head of Year and supportive Associate Head of Year. A key part of the Tutor's role will be to ensure that your child feels settled and happy; they will also be the first point of contact for parents/carers.

ATTENDANCE

It is vital that all pupils aim to have excellent attendance. Research shows that even a few days of absence can have a negative impact on pupils' performance and we know that poor attendance can also impact on wider pupil wellbeing. Parents/carers should report absence as soon as possible.

REWARD SYSTEM

Our system of merit points rewards pupils who have been ambitious, shown excellence, respected each other, or shown great teamwork, and our C1 and C2 behaviour system reminds pupils of our high expectations. For the small number of pupils that do not meet our expectations, we use an immediate detention system.

SEN AND VULNERABLE PUPILS

We recognise that moving to a new school can be especially difficult for pupils who have specific needs. This is why we seek to work closely with their previous school and keep a constant dialogue with parents/carers and pupils before transition. This may involve extra transition days, home visits and close liaison with relevant external agencies.

PERSONAL DEVELOPMENT CURRICULUM

This is a bespoke five-year curriculum which provides valuable and effective support to develop and promote pupils understanding of modern Britain and our fundamental values. The curriculum is designed to ensure pupils know how to be effective Judgemeanow learners; keep themselves safe in their communities and online; and deal with the myriad of issues facing young people in the world today including bullying, health and wellbeing, mental health, diversity, the dangers of drug use, knife crime and radicalisation.

UNIFORM

Uniform helps our pupils feel a sense of pride and belonging to our school community. All pupils at Judgemeanow Community College are expected to be neat and tidy in their appearance and to wear school uniform in school, on the journey to and from school and on school occasions (unless otherwise instructed). Our school uniform, designed with input from our pupils, is smart, attractive, easy to obtain and good value. Further information about school uniform and how to order can be found on the website.



SCAN
HERE FOR
UNIFORM
AND HOW TO
ORDER

PARTNERSHIP WITH UNIVERSITY OF LEICESTER

This partnership allows us to enrich our curriculum through events that capture our pupils' imaginations, such as working with their Classical Association to inspire a love of Art and Classics. Pupils also have access to their world-class facilities and internationally recognised lecturers and speakers. Through this partnership, we can offer a greater level of guidance to Higher Education from an earlier starting point, where young people can be mentored and given access to residential courses applicable to a range of subjects including Law, Medicine and Engineering. We are confident that this gives our pupils the edge in a competitive market.

Enrichment

At Judgemeanow Community College, we pride ourselves on supporting pupils' academic and personal progress through a strong curriculum and a number of enrichment opportunities.

Every young person is a valued individual and we want to create a platform for them to go beyond their expectations. Parents/carers can feel safe in the knowledge that their child will be encouraged to be everything they want to be.

Extra-curricular activities as diverse as sport, the arts, classics, and languages offer pupils the chance to work with peers, challenge themselves and find new interests. Trips and excursions, visiting speakers and careers support start pupils thinking about life beyond school and encourage aspiration.

Our Year 7 pupils also enjoy participation in whole school drama productions, sports teams, and design exhibitions.

EXTRA-CURRICULAR ACTIVITIES

Pupils can choose from over 20 extra-curricular activities which typically include:

BAFTA Young Games Designer Club • Soul/Jazz Band • College Orchestra • Drama Club • Classics Club • First Writing Club • Chess and Games Club • Rugby Club • Football Club • Table Tennis Club • Duke of Edinburgh's Award

We encourage every pupil to pursue their extra-curricular interests, supporting them beyond the curriculum to ensure they develop in to well-rounded young people. Performances throughout the year allow our pupils to share their talents with parents and peers, providing a platform on which to showcase talent.



Admissions

Process

We hope that as you've read this prospectus, you have been able to get a sense of our excitement and passion for education and teaching 11-16 year olds. We welcome applications from pupils across the City and County.

It is important to stress that whilst Judgemeadow Community College is an Independent State Funded Academy, we have commissioned Leicester City Council to manage and administer the application and appeals process.

ADMISSIONS PROCESS

Full details of the admissions process, including contact details for submitting your application, can be found on our website.



SCAN
HERE FOR
ADMISSIONS
PAGE



Apply for school place by **31st October** on local council website.



Results given in early March on Council website.



Access by signing into your online admissions account.

If you are not happy with your child's school allocation, you may appeal via the council.

OR

Accept your child's school allocation on the council website.

CONTINUE YOUR JOURNEY

WITH LIONHEART EDUCATIONAL TRUST



**BEAUCHAMP CITY
SIXTH FORM**
Lionheart Educational Trust

BEAUCHAMP CITY SIXTH FORM LEICESTER CITY CENTRE

Beauchamp City Sixth Form, based in Leicester's City Centre, aims to inspire, educate and empower students through a traditional, academic curriculum so that we may instil a life-long love of learning.

With a focus on the core traditional A-Level subjects, our goal is to create aspirational and well-rounded individuals who are ready to pursue higher education with the most prestigious universities and providers; regardless of their individual backgrounds.

We are excited by the prospect of delivering a new and unique approach to sixth form education in Leicester City and hope you will join us on our journey to excellence.

For more information, please visit:
www.beauchampcity.org.uk



**BEAUCHAMP
COLLEGE**
Lionheart Educational Trust

BEAUCHAMP COLLEGE OADBY, LEICESTERSHIRE

Beauchamp College is a proud, comprehensive college with a history of providing opportunities for students from all backgrounds to achieve their full potential.

Based in Oadby, Leicestershire, we boast a broad and balanced curriculum; well-known for our wide array of creative and traditional A-Level and Post-16 courses. Our holistic development programmes encourage growth outside of the classroom, and develop key skills necessary for entrance in to the workplace.

We have a proven track record of success for Post-16 provision, with many of our sixth formers moving on to prestigious universities and pursuing highly coveted apprenticeships and degree apprenticeships with renowned employers.

For more information, please visit:
www.beauchamp.org.uk



Our Trust

The Lionheart Educational Trust was founded in April 2014 in order to establish a foundation for the improvement and enhancement of educational provision in the East Midlands.



Our aim is to provide a range of educational experiences that are challenging, equitable, enjoyable and are able to break down any barriers so that all can succeed. This involves seeking to create lifelong learners and offer outstanding provision for our 4-19 year olds.

Our educational mission is simple; To empower every person from every background to unlock their future and thrive in a competitive world. The Lionheart Educational Trust is committed to supporting young people to open doors to their futures and to feel confident that they can thrive in a competitive and ever-changing world.

We pledge this commitment through limitless enthusiasm and optimism to provide a platform for each young person's light to shine brightly. To fulfil our pledge, we commit to the 3 Ps: Pupil-Centred, Positive and Professional. We know that promoting this positive and proactive approach that celebrates success unites school communities and breaks down barriers to learning.

As our journey continues, we believe that it is our moral imperative to continue to work closely with a range of educational providers so that as many young people can benefit from the high educational standards we set ourselves. For more information, please visit our Trust website at: www.lionhearttrust.org.uk



LIONHEART
EDUCATIONAL TRUST



Ofsted

Good
Provider

**“STAFF AT JUDGEMEADOW HAVE HIGH EXPECTATIONS
OF ALL PUPILS. LEADERS WANT PUPILS TO SUCCEED
ACADEMICALLY AND SOCIALLY.”**

OFSTED 2022

JUDGEMEADOW COMMUNITY COLLEGE

Marydene Drive, Evington,
Leicester, LE5 6HP

 0116 241 1920
 office@judgemeadow.org.uk
 www.judgemeadow.org.uk
 @Judgemeadow
 JudgemeadowCommunityCollege
 official_judgemeadow



**JUDGEMEADOW
COMMUNITY COLLEGE**



**LIONHEART
EDUCATIONAL
TRUST**